

# Uflow<sup>®</sup>

## Automation

### INDIA

Automation  
Simplified...

Committed to Providing Quality Products  
with the Best Service

Solenoid Valve | Angle Seat Valve | Rotary Coupling  
Pneumatic Directional Control Valve | Actuator | Cylinder  
One Touch Fitting | Ball Valve | Butterfly Valve

Country of Origin - INDIA





# COMPANY PROFILE

**Uflow Automation** is an engineering organization committed to providing complete solutions to customer's requirements. We are established in the year 2007 and progressing with a vision of applying finest engineering practices in valve manufacturing industry by our restless and high skilled **ENGINEERS**, standard organizational **PROCESSES** and superior quality **PRODUCTS**.

We are a leading solenoid valve manufacturing company in India, known as **UFLOW**, our range of products includes - Pilot Operated Diaphragm Type Valves, Pneumatically Control Valves, Gas Solenoid valves, High Pressure Valves, Industrial Valves, Pneumatic Directional Control Valves, Rotary Coupling and Actuators. Our products are sold across INDIA and being exported outside India in various other countries.

Our Quality	Our Commitment	About Us
<ul style="list-style-type: none"> <li><input checked="" type="checkbox"/> In-House full scale testing facility.</li> <li><input checked="" type="checkbox"/> Lean Manufacturing Practices / Six Sigma, Kaizen, 5s.</li> <li><input checked="" type="checkbox"/> Certified by : ISO 9001:2015 (TUV Nord), CE, ERDA, CIMFR, BIS, PESO.</li> </ul>	<ul style="list-style-type: none"> <li><input checked="" type="checkbox"/> To understand customer's need first before proposing our products.</li> <li><input checked="" type="checkbox"/> To keep on providing competitive rate's by adapting to continuous process improvement, without compromising on quality.</li> <li><input checked="" type="checkbox"/> To provide continuous support to our customers and go beyond their expectations in terms of delivery and after sale services.</li> </ul>	<ul style="list-style-type: none"> <li><input checked="" type="checkbox"/> In house R&amp;D, manufacturing and testing facility is all located in a single premise at Rajkot Gujarat India.</li> <li><input checked="" type="checkbox"/> Authorized channel partners in 20 different states in India.</li> <li><input checked="" type="checkbox"/> Sales office in the UAE, Germany, Chile, Australia (Expanding).</li> </ul>

**We started building our products for a specific market segment and over the period of time we progressed to built it for various sectors that includes:**

- |                                             |                                                     |                                                    |                                                       |                                                    |                                                |
|---------------------------------------------|-----------------------------------------------------|----------------------------------------------------|-------------------------------------------------------|----------------------------------------------------|------------------------------------------------|
| <input checked="" type="checkbox"/> Textile | <input checked="" type="checkbox"/> Water Treatment | <input checked="" type="checkbox"/> Energy & Power | <input checked="" type="checkbox"/> Packaging         | <input checked="" type="checkbox"/> Pharmaceutical | <input checked="" type="checkbox"/> Oil & Gas  |
| <input checked="" type="checkbox"/> Nuclear | <input checked="" type="checkbox"/> Marine          | <input checked="" type="checkbox"/> Chemical       | <input checked="" type="checkbox"/> Food and Beverage | <input checked="" type="checkbox"/> Steel & Cement | <input checked="" type="checkbox"/> Automotive |

**We stand amongst the pioneers of the industry because of our following competitive advantages:**

- Total quality management allow us to maintain the quality of our products,
- We follow genuine customer relationship policy and that help us to build trusted relationships.
- We believe in timely delivery and consistent quality standard, and this is possible due to the state of the art testing facility, that ensures our customers don't have any complains.
- Innovative products range with sophisticated and latest technology.
- Qualified customer service team, facilitate with the customers to resolve their respective query. Also feel free to ask for our customer references and product samples.

Uflow's quality control is based on the platform of stringent process control by elimination of production variances; by a computerized integrated system we are able to guarantee the quality of products, and by recording each production step to ensure effective data analysis as well as a complete and efficient traceability of both Components and finished products. This practice helps us in maintaining standards of high competitiveness in the marketplace.

**Note:** \* For any other information contact Uflow.  
\* All information may change without prior notice.



### Pilot Operated Diaphragm Type Solenoid Valve

Pipe Size : 1/2" to 2"  
 Pressure : 0.5 to 10 bar  
 Seal Material : NBR / VITON / EPDM  
 Valve Material : Brass



### Pilot Operated Diaphragm Type Solenoid Valve

Pipe Size : 3/8" to 4"  
 Pressure : 0.5 to 12 bar / 1 to 20 bar  
 Seal Material : NBR / VITON / EPDM  
 Valve Material : CF8 / CF8M



### Semi Lift Diaphragm Operated Solenoid Valve

Pipe Size : 3/8" to 2"  
 Pressure : 0 to 4, 7, 10 bar  
 Seal Material : NBR / VITON / EPDM / PTFE  
 Valve Material : CF8 / CF8M / Brass



### Pilot Operated Piston Type Steam Valve

Pipe Size : 1/2" to 2"  
 Pressure : 1.5 to 12 bar & 1.5 to 40 bar  
 Seal Material : PTFE  
 Valve Material : CF8 / CF8M



### Pulse Jet Angle Type Dust Collector Valve

Pipe Size : 1" & 2 1/2"  
 Pressure : 0.5 to 8.5 bar  
 Seal Material : NBR  
 Valve Material : Aluminium



### GAS Solenoid Valve

Pipe Size : 1/2" & 1"  
 Pressure : 0 to 350 mbar / 0 to 500 mbar  
 Seal Material : NBR  
 Valve Material : Aluminium



### 2/2 & 3/2 Way Direct Acting Solenoid Valve

Pipe Size : 1/8", 1/4", 3/8" & 1/2"  
 Pressure : 0 to 1, 2, 3, 4, 5, 7, 10, 16, 25, 40, 60, 100, 150 bar.  
 Seal Material : NBR / VITON / SILICONE / EPDM  
 Valve Material : CF8 / CF8M / Brass / Aluminium



### Angle Seat Valve with Plastic Actuator

Pipe Size : 1/2" to 2 1/2"  
 Pressure : 0 to 16 bar  
 Pneumatic Pressure : min 3.5Kg/cm<sup>2</sup>  
 Seal Material : PTFE / PEEK / VITON  
 Valve Material : CF8 / CF8M



### Angle Seat Valve with SS Actuator

Pipe Size : 1/2" to 2"  
 Pressure : 0 to 16 bar  
 Pneumatic Pressure : min 3.5Kg/cm<sup>2</sup>  
 Seal Material : PTFE / PEEK / VITON  
 Valve Material : CF8 / CF8M



### Pilot Operated Diaphragm Type Nylon GF Solenoid Valve with Flow Controller

Pipe Size : 3/4", 1", 1 1/2" & 2"  
 Pressure : 0.5 to 10 bar  
 Seal Material : Natural Rubber  
 Valve Material : Nylon GF



### Semi Lift Diaphragm Operated Nylon GF Solenoid Valve

Pipe Size : 1/2", 3/4" & 1"  
 Pressure : 0 to 4, 7 bar  
 Diaphragm Material : NBR  
 Valve Material : Nylon GF



### External Pilot Operated Diaphragm Valve

Pipe Size : 1 1/2", 2", 2 1/2", 3" & 4"  
 Pressure : 1 to 10 bar  
 Diaphragm Material : Natural Rubber  
 Valve Material : Nylon GF



### Proportional Flow Control Solenoid Valve - Low & High Flow

Pipe Size : 1/8" Barb, Manifold Mounting  
 Pressure : 10, 30, 35, 45, 60 PSI  
 Seal Material : NBR / FKM  
 Body Material : Brass



### Solenoid Coils

Coil Type : Epoxy Molded With LED Din Connector, IP-67 Flame Proof Junction Box, Metallic Round Shape With Lead Wire, IP-68 Weather Proof Metallic Round Enclosure, IP-67 Weather Proof Junction Box  
 Coil Bore Diameter : 5mm, 8mm, 10mm, 12mm, 14mm, 16mm, 18mm, 28mm, 30mm  
 Class : H-Class, Weather Proof IP-68, Flame Proof IP-67  
 Voltage : 24V AC, 110V AC, 230V AC, 12V DC, 24V DC

INDUSTRIAL VALVE



**Rotary Quarter Turn Pneumatic Actuator (Single Acting / Double Acting)**

Rotation : 90° ± 5° Over & Under Travelling  
 Seal Material : Nbr / Viton / Floursilicone  
 Material : Aluminium  
 Working Pressure : Max 8 bar



**Roto Seal Coupling**

Port : ¼" to 2"  
 Media : Air, Water, Oil & Gas  
 Pressure : Upto 10 bar  
 Temperature : Viton (FKM): -10°C to 180°C  
 RPM : 1000 RPM



**Limit Switch**

- Compact & Lightweight design
- Open / Close indication show in any direction.
- Temperature range -20°C to +80°C
- Additional mounting is available as the UNC series.
- No extra attachment requires for the indicator dome inbuilt with a transparent cover.



**Ball Valve With Pneumatic Actuator**

Pipe Size : ½" to 4"  
 End Connection : Screwed end, Socket Weld  
 Pressure Class : 150#  
 Seal Material : PTFE/RPTFE/CFT/GFT/PEEK  
 Valve Material : CF8/CF8M/WCB/CF3M  
 Standard : ASME B16.11, API 598, ASME B16.34, BS EN ISO 17292  
 Mounting Flange : ISO 5211  
 Testing Standard : API 598



**3 Piece Flange Ball Valve Manual**

Pipe Size : ½" to 4"  
 End Connection : Flange end, Butt weld  
 Pressure Class : 150#  
 Seal Material : PTFE/RPTFE/CFT/GFT/PEEK  
 Valve Material : CF8/CF8M/WCB/CF3M  
 Standard : ASME B16.10, ASME B16.25, ASME B16.34, ASME B16.5, API 598, BS EN ISO 17292  
 Mounting Flange : ISO 5211  
 Testing Standard : API 598



**Butterfly Valve**

End Connection : Wafer - API 609 (CAT - A)  
 Range : DN40 - DN300  
 Pressure : PN10 - PN16  
 Body Material : CAST IRON, SGI, WCB, CF8, CF8M  
 Disc Material : SGI, WCB, CF8, CF8M  
 Body Liner / Seat Material : NBR, EPDM, VITON

PNEUMATICS



**Pneumatic Air Cylinder Magnetic & Non Magnetic (As Per ISO 15552 / VDMA 24562 Standards)**

Product Type : Tie Rod, Profile & Double End  
 Cylinder Bore Ø : 32, 40, 50, 63, 80, 100  
 Pressure : 0.5 to 10 bar  
 Materials : Aluminium, Nitrile, Steel, Acetal, Polyurethane



**Pneumatic Air Cylinder Magnetic & Non Magnetic (As per ISO 6431 / CETOP RP43P, RP53P standards)**

Product Type : Tie Rod  
 Cylinder Bore Ø : 32, 40, 50, 63, 80, 100  
 Pressure : 0.5 to 10 bar  
 Materials : Aluminium, Nitrile, Steel, Acetal, Polyurethane



**3X2, 5X2, 5X3 Single & Double Solenoid Valve**

Port Size : ½" & ¼"  
 Pressure Range : 2 -10 bar  
 Valve Material : Aluminium / Nitrile / Brass / Polymer  
 Seal Material : NBR



**3X2, 5X2 Single & Double Solenoid Namur Valve**

Port Size : ½" & ¼" Namur  
 Pressure Range : 2 -10 bar  
 Valve Material : Aluminium / Nitrile / Brass / Polymer  
 Seal Material : NBR



**3X2, 5X2 Push Pull Valve**

Port Size : ½" & ¼"  
 Pressure Range : 0 -10 bar  
 Valve Material : Aluminium / Nitrile / Brass / Polymer  
 Seal Material : NBR



**3X2, 5X2, 5X3 Single & Double External Pilot Operated Valve**

Port Size : ½" & ¼"  
 Pressure Range : 2 -10 bar  
 Valve Material : Aluminium / Nitrile / Brass / Polymer  
 Seal Material : NBR



### 3X2, 5X2, 5X3 Hand Lever Valve

Port Size : 1/2" & 1/4"  
 Pressure Range : 0 -10 bar  
 Valve Material : Aluminium / Nitrile / Brass / Polymer  
 Seal Material : NBR



### Air Preparation Units

Port Size : 1/4", 3/8", 1/2", 3/4" & 1"  
 Pressure Range : 0.5 -10 bar  
 Valve Material : Aluminium / Nitrile / Brass  
 Seal Material : NBR  
**Note :**  
 Also available with pressure gauge on request



### One Touch Fitting

Fluid : Air  
 Max. Operating Pressure : 10 bar  
 Application Tube Size (OD) : Ø4, Ø6, Ø8, Ø10, Ø12, Ø14, Ø16  
 Applicable Tube Material : Nylon, Polyurethane  
 Threaded Connection : Male: R-Taper Thread, Female : G-Parallel Thread



### Polyurethane Tube & Nylon Tube (N6, N12)

Size (Ø) : 4 6 8 10 12 14 16  
 Available Colors : Blue, Red, Yellow, Black, Transparent, Silver



### Pneumatic Air Cylinder Accessories

- Foot Mounting
- Male & Female Clevis
- Center Trunnion
- Rod End Fork
- Rod End Aligner
- Front and Rear Flange
- Front & Rear Trunnion
- Clevis Foot Bracket
- Rod End Spherical Eye



### Manifold For DCV Series

Port Size : 3/8" & 1/2"  
 Ease of maintenance.  
 Inlet & Exhaust on the manifold.  
 Blanking plate can be installed or removed as per need according to future requirements



### Direct Acting Poppet Valve

Type : 3 Way  
 Port Size : 1/4", 1/2"  
 Working Pressure Range : 0-10 bar  
 Valve Material : Aluminium, Nitrile, Brass, Polymer



### Directional Control Poppet Valve

Type : 3X2, 5X2  
 Port Size : 1/4", 1/2"  
 Working Pressure Range : 2-10 bar  
 Valve Material : Aluminium, Nitrile, Brass, Polymer



### High Pressure Regulator

Port Size : 1/2"  
 Body : WCB, Aluminium  
 Seals : Nitrile (NBR)  
 Media : Compressed Air (Filtered & Lubricated)  
 Pressure Range : Inlet - 3 to 42 bar, Regulated 0 to 42 bar



### 3/2 Single and Dual Pressure Blow Solenoid Poppet Valve

Port Size : 1/2"  
 Pressure Range : 3 - 20 bar  
 Valve Material : Aluminium / Nitrile / Brass / Polymer  
 Seal Material : NBR



### High Pressure Pilot Operated Diaphragm Type Solenoid Valve (Normally Close)

Port Size : 1/2" & 3/4"  
 Pressure Range : 1.5 - 40 bar  
 Valve Material : Brass  
 Seal Material : PUR

NEW PRODUCTS



3X2 AND 5X2 FOOT OPERATED VALVE



PINCH TYPE SOLENOID VALVE (NC / NO)



2/2 WAY CONTROL VALVE WITH ALUMINIUM OPERATOR(NC)



2/2 SOLENOID VALVE FOR TERMINAL / GANTRY AUTOMATION (NC / NO)



2 WAY DIRECT ACTING MEDIA SEPARATED SOLENOID VALVE (NORMALLY CLOSE)



2/2 WAY DIRECT ACTING AUTO DRAIN SOLENOID VALVE (NC)

UPCOMING PRODUCTS



MINIATURE CYLINDER



COMPACT CYLINDER



REED SWITCH



POLYURETHANE COILED TUBE



BRASS SILENCER



QUICK EXHAUST VALVE

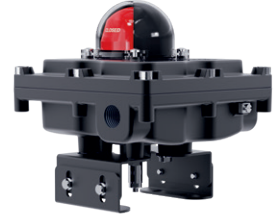
UPCOMING PRODUCTS



INLINE FLOW CONTROLLER



AIR GUN



STANDARD LIMIT SWITCH (IP67)

\* For upcoming products all information may change without prior notice.

OUR CLIENTS



# Global Presence...



Made In India



## CONTACT US:

✉ [sales@uflowvalve.com](mailto:sales@uflowvalve.com) ☎ +9185110 98822 🌐 [www.uflowvalve.com](http://www.uflowvalve.com)

📍 Uflow Automation, Ankur Industrial Complex, Survey No: 275/276, Plot No: 31, Nr. Intol Cast Pvt. Ltd. Shapar(Veraval) Dist.: Gujarat (India) - 360 024.