



EXCELLENCE IN INDUSTRIAL FLOW SOLUTIONS

COMPANY PROFILE





Contents

Company Overview	03
Quality Policy & Certifications	04
Health, Safety & Environment Policy	05
Infrastructure & Facilities	06
Range of Products	07
Materials of Construction	08
Clientele	09
Product Gallery	10

WHO WE ARE

YOUR GLOBAL PARTNER TO CREATE GROWTH AND VALUE IN
INDUSTRIAL FLOW SOLUTIONS

QUEST FOR EXCELLENCE... THE JOURNEY NEVER ENDS

When SteelStrong was started in 1982, it was based on the fundamental belief that a good quality product never loses its shine. We worked with limitless enthusiasm to offer our customers quality products at competitive costs and with firm commitment that we will serve the industry through all its ups and downs, without succumbing to financial or market pressures. Three and a half decades later, when we look back at our journey and the way we have grown, we have every reason to believe that we did the right things. Today as we boast a sprawling 7,92,000 square feet campus of valve manufacturing excellence at Sanand Ahmedabad and at Navi Mumbai, we re-affirm our commitment that we shall not rest on our laurels. Brick by brick, we built the edifice called SteelStrong, growing on strength with prestigious approvals from EIL, ONGC, IOCL, HPCL, GAIL, NTPC, NPCIL, BHEL, SIEMENS, NFL, GNFC etc. to name a few, and with our feet firmly grounded in domestic market.

As we spread our wings and flew overseas, we received instant recognition with prestigious approvals from PDO and ADNOC, once again proving that good quality and manufacturing confidence never lets you down. Our journey has just begun, and we know the road ahead is winding, fluid and hazy. We surge ahead strongly with confidence and pride, falling back on the strong foundation laid by our founders, towards an organisation that creates prosperity for all its stakeholders, growth and productivity for the nation and a greener and cleaner tomorrow

Certifications

Rabale (Navi Mumbai)

- ▶ ISO 9001
- ▶ CE Marking
- ▶ IBR Certification

Sanand Works (Ahmedabad)

- ▶ ISO 9001, 14001, 18001
- ▶ API 6D, API 600
- ▶ CE-PED Certification
- ▶ IBR Certification

Approved by all leading Consultants /
Contractors / End users in India.

Quality Policy

SteelStrong Valves is committed to design, manufacture, supply & servicing of industrial valves conforming to customer requirements & product specification. SteelStrong valves is also committed to continually improve the customer satisfaction and quality management system as per international standards adhering to legal requirements.



Health, Safety & Environment Policy

SteelStrong is firmly committed to providing all its employees a safe work environment whilst meeting our duties and obligations to our customers. SteelStrong will seek to ensure that all its infrastructure, equipment, processes and practices are maintained to ensure minimum impact on Health and Safety of everyone within the premises.

WE RECOGNISE THAT HSE IS EVERYONE'S RESPONSIBILITY AND THAT WE ALL HAVE A DUTY TO INTERVENE TO PREVENT UNSAFE ACTIONS AND TO REINFORCE GOOD BEHAVIORS.

OUR GOAL IS ZERO INJURIES

The safe delivery of projects and operation of facilities is a critical success factor. It is not just the end result that matters, we care about how we get there.

Steelstrong Valves Belief & Commitment



SAFETY AT THE WORKPLACE

Providing a safe work place is our topmost priority and we consider it the prerogative of every individual within the SteelStrong premises.



HAZARD EVALUATION

We at SteelStrong will be continually monitoring hazards, near misses and will leave no leaf unturned to continuously fortify our Safety processes.



IMPACT ON ENVIRONMENT & SOCIETY

SteelStrong will also be sensitive to the impact our processes have to environment and the society around us and will ensure that our processes are totally harmonious with nature.



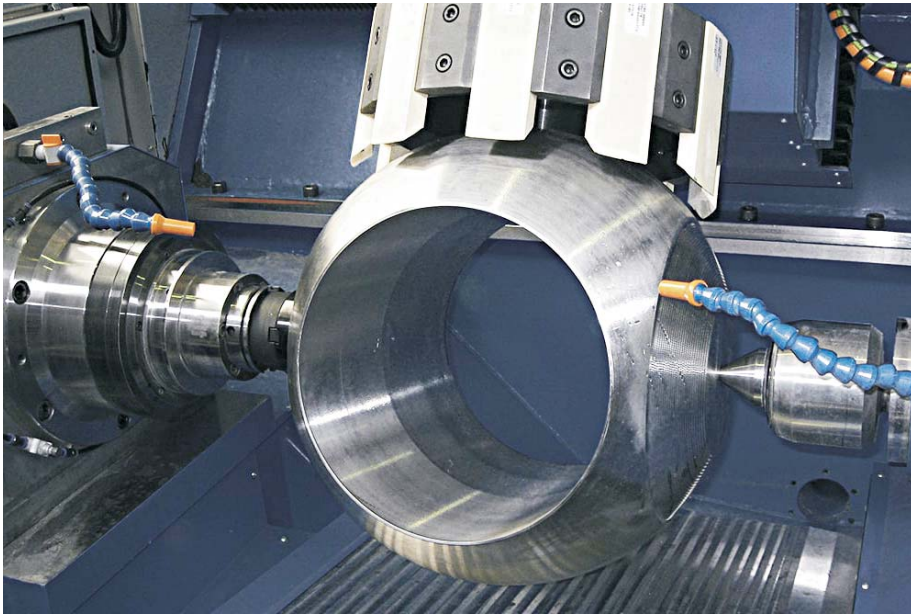
CONSERVATION & CARBON FOOTPRINT

SteelStrong will continuously evaluate its energy consumption and efficiencies and shall strive to reduce the Carbon footprint as well as conserve precious resources like water which may be consumed during our manufacturing and testing processes.



SAFETY CULTURE

SteelStrong shall strive to ensure that beliefs, perceptions and attitudes are oriented towards creating a safety culture which encourages surfacing of any unsafe practices and systematically working towards eliminating the hazards and risks in a transparent safety culture.



**Let's Create
Our Growth
Strategy
Together**

Infrastructure & Facilities

A fully equipped, in-house manufacturing facility complemented by state-of-the-art design facilities provides customers with bespoke engineered solutions, capable of operating to industry leading standards.

A dedicated research and development team, working with innovative solutions to process applications, providing significant infrastructure benefits to customers.

RANGE OF PRODUCTS

Valve Type	150#	300#	600#	900#	1500#	2500#
Gate (Bolted / Pressure seal)	Up to 64"	Up to 60"	Up to 56"	Up to 36"	Up to 30"	Up to 24"
Globe (Bolted / Pressure seal)	Up to 24"	Up to 20"	Up to 20"	Up to 16"	Up to 12"	Up to 10"
Swing Check (BS 1868/API 6D)	Up to 60"	Up to 60"	Up to 54"	Up to 36"	Up to 30"	Up to 24"
Ball Valve (Metal to metal, Lip Seal, Soft Seated & Fully welded)	Up to 48"	Up to 48"	Up to 48"	Up to 36"	Up to 24"	Up to 12"
API 6D Gate Valve	Up to 48"	Up to 48"	Up to 48"	Up to 24"	Up to 24"	Up to 12"

Materials of Construction

BODY / BONNET / COVER

Carbon Steel

ASTM A 216 Gr. WCB / WCC, A352 Gr. LCB / LCC

Stainless Steel

ASTM A 351 Gr. CF8 / CF8M / CF3 / CF3M / CF8C / CN7M

Alloy Steel

ASTM A 217 Gr. WC1, WC-6 / WC-9 / WC-12, C-5, C-9, C-12, A 490 Gr., Hastelloy B/C, DSS etc.

Non Ferrous

Aluminium Bronze, Bronze etc.

MATERIAL OF CONSTRUCTION

- ASTM A 105
- ASTM A 182, F304, F316, F304L, F316L
- F-5, F-11, F-22, F-51 etc.
- ASTM A350 - LF.2, LF.5, LF.9

TRIM MATERIAL

For Cast / Forged Valves

13% Cr. Steel / SS 304 / SS 316 / Monel / Stellite / Alloy 20 etc.

FORGED VALVES

Valve Type	800#	1500#	2500#	4500#
Gate Valve	Up to 2"	Up to 2"	Up to 2"	Up to 2"
Globe Valve	Up to 2"	Up to 2"	Up to 2"	Up to 2"
Lift Check Valve	Up to 2"	Up to 2"	Up to 2"	Up to 2"
Ball Valve	Up to 2"	Up to 2"	Up to 2"	Up to 2"

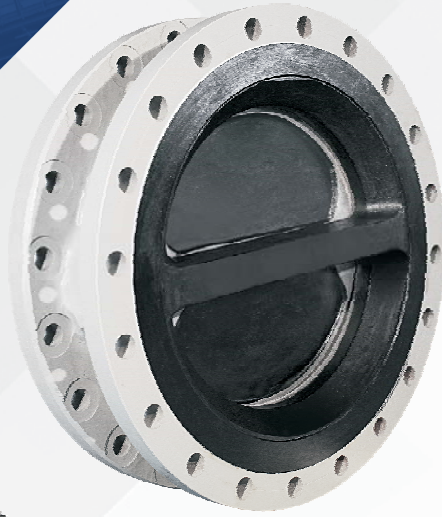
SPECIAL FEATURES

- ▶ Valves with API - Monogram (API 600 & 6D Valves).
- ▶ Electric / Pneumatic Actuators & Gear operators, Gas over oil actuators.
- ▶ Swing Check Valves with dashpot arrangements.
- ▶ Valves with jacketing, rubber lining, extended spindle & ENP etc.
- ▶ Valves with extended bonnet.
- ▶ Corro / Terro glass coated valves / FRE lined valves.

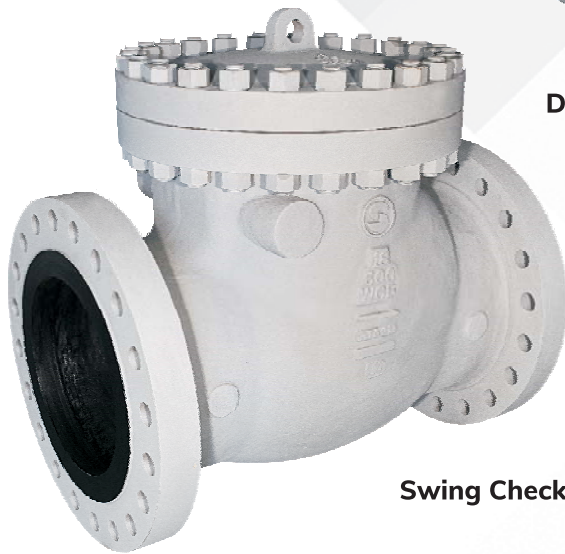
Valuable Clientele



Product Gallery



Dual Plate Check Valve



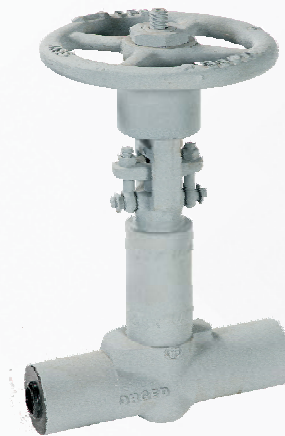
Swing Check Valve



Gate Valve



High Pressure Forged Inconel Globe Valve

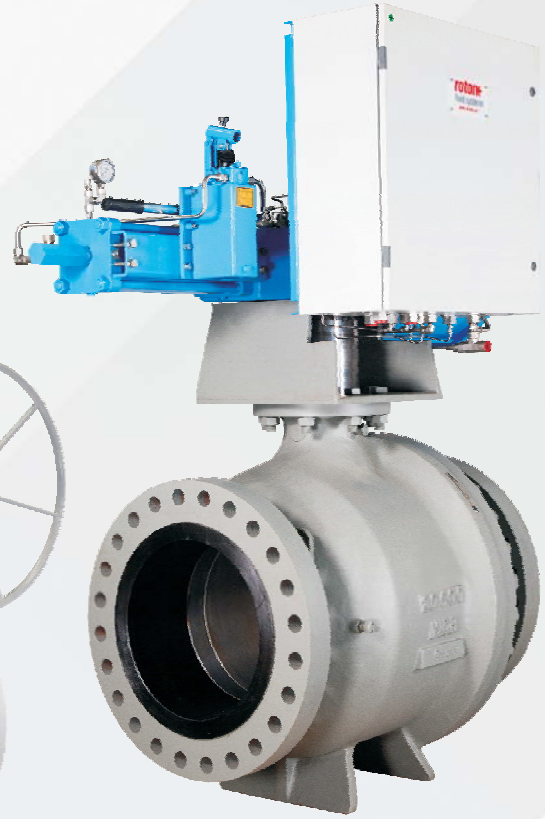
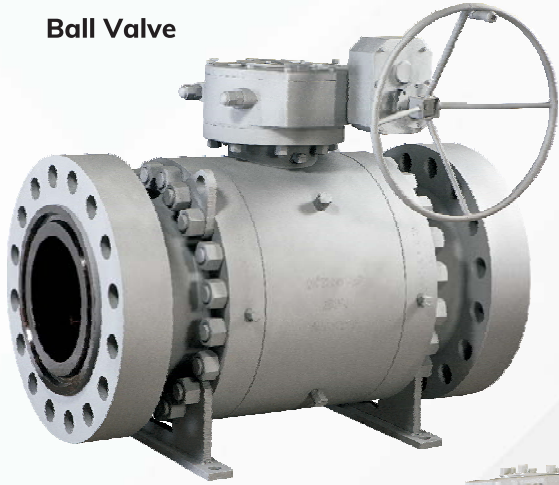


Bellow Seal Valve



Pressure Seal Valve

Ball Valve



**Trunnion Mounted
Ball Valve**



Goa Trunnion Mounted Ball Valve



**API 6D Through
Conduit Gate Valve**



Cryogenic Gate Valve



Extended Stem Underground TMBV



Steelstrong Valves (I) Pvt. Ltd.

📍 HEAD OFFICE & PLANT - I

R241, TTC Industrial Area, MIDC,
Rabale, Navi Mumbai-400701,
Maharashtra, India.

☎ +91 22 27690074

🌐 adminsteelstrong@steelstrong.com 🌐 www.steelstrong.com

📍 PLANT - II

B-176/186, Ajanta Industrial Estate,
Vasna-Iyava, Sanand,
Ahmedabad 382170, Gujarat (India).

☎ +91-2717-619100

📍 Middle East Sales Office

Office No. LB13119,
Dubai,
United Arab Emirates.

🌐 sales@steelstrong.com