

Manufacturing Since 1984



**Flovel Valves Pvt Ltd**

## **Flovel Valves Pvt. Ltd.**

### **UNIT - 1**

Plot No. 1201, Phase 4, GIDC,  
VU Nagar - 388121, Anand, Gujarat, India

### **UNIT - 2**

Plot No. 1110, Phase - 4, GIDC,  
VU Nagar - 388121, Anand, Gujarat, India

### **UNIT - 3**

Plot No. 1205/1206, Phase - 4, GIDC,  
VU Nagar - 388121, Anand, Gujarat, India

[www.flovelvalves.com](http://www.flovelvalves.com) | [www.checkvalve.com](http://www.checkvalve.com)  
[sales@flovelvalves.com](mailto:sales@flovelvalves.com) | [mkt@flovelvalves.com](mailto:mkt@flovelvalves.com)  
+91 95122 12212



Petrochemicals | Refineries | Oil & Gas Industries

IBR | EIL | ISO | CU TR | EC PED

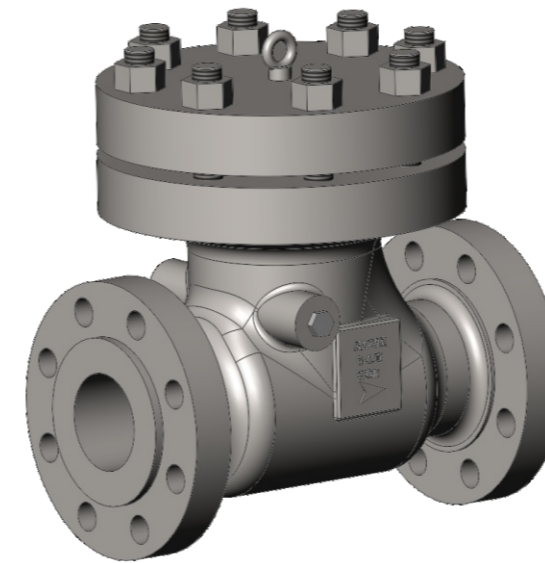


### DUAL PLATE CHECK VALVE

Flovel Valves has taken leadership in designing and manufacturing Dual Plate Check Valves, supplying to HVAC OIL & GAS, Petrochemicals, Refineries, Steel Plants, Fertilizer, Chemical, Food and various other sectors internationally.

Designed as per API594 / API6D / API598

| Sizes  | Pressure Class                                  |
|--|---|
| 2" - 104" (50mm-2600mm)  | ASME 150-2500   API 2000-20000   PN 10 - PN 400 |
| <b>End connection</b> - Wafer   Flanged   Solid Lug   ButtWeld End   Hub-End |   |



### SWING CHECK VALVE

Swing Check Valves are single-direction flow valves used to allow unlimited flow in one direction and restrain flow in the opposite direction. Swing check valves are straight-through valves that work automatically.

Designed as per API 6D / BS 1868 / ASME B16.34 / ASME B16.10

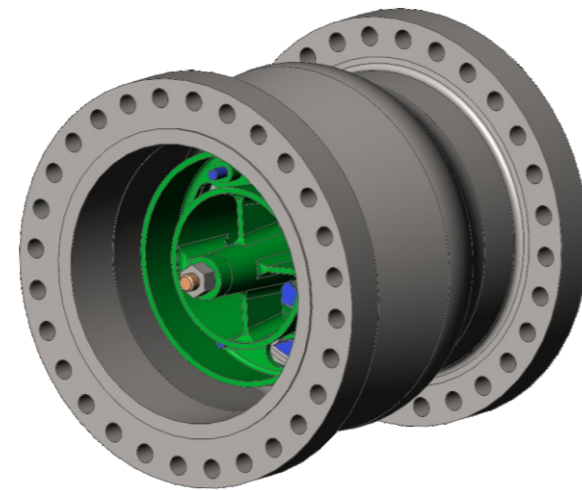
| Sizes   | Pressure Class     |
|---|--------------------|
| 2" - 12" (50mm-2600mm)                          | #150   #300   #600 |
| <b>End connection</b> - Flanged END   Wafer END |                    |

### NON SLAM NOZZLE CHECK VALVE

Nozzle check Valve has High Velocity flow without Cavitation and Surge Protection are the Key reasons to install Nozzle Checks. It has an edge over Swing / Dual Checks when compared for Pressure Drop and Cv values.

Designed as per API6D / ASME B16.34

| Sizes   | Pressure Class                                 |
|---|--|
| Single - 0.5" - 14" (DN 15 - DN 350)<br>Double - 16" - 80" (DN 400 - DN 2000) | ASME 150-2500   API 5000-30000   PN 10 - PN 64 |
| <b>End connection</b> - Flanged   ButtWeld   HUB                              |  |

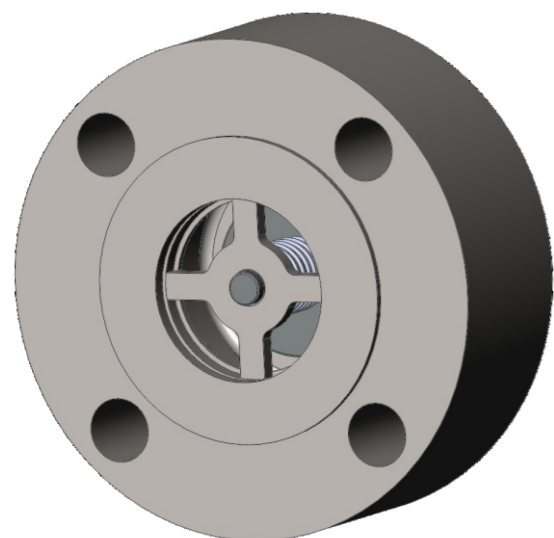
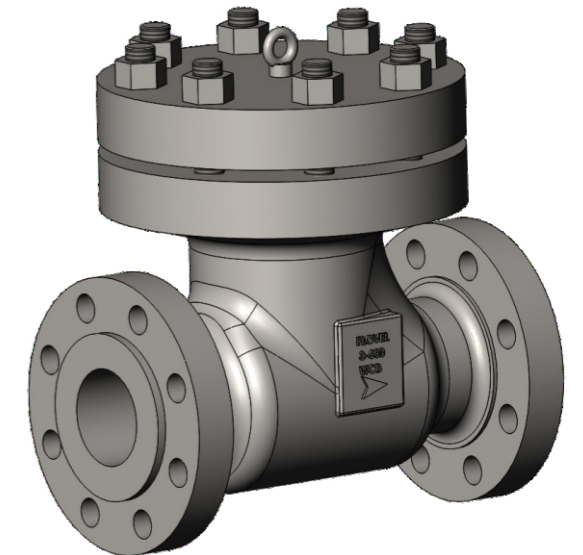


### PISTON LIFT CHECK VALVE

Flovel manufactures Piston Type Check Valves is the unique full opening design is best suited to dampen the piston's response to sudden or rapid changes in flow, negating the chances of pressure drop across the valve.

Designed as per API 602 / ISO 15761 / ASME B16.34

| Sizes   | Pressure Class       |
|---|----------------------|
| 1/2" - 2"   | #800   #1500   #2500 |
| <b>End connection</b> - Butt Weld   Socket Weld   Screwed   Flanged |                      |

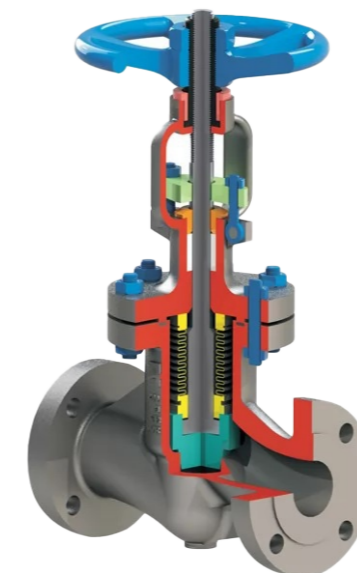


### SINGLE DISC CHECK VALVE

Flovels' highly specialized product range includes custom designed check valves catering to various services, serving HVAC OIL & GAS, Petrochemicals, Refineries, Steel Plants and various other sectors internationally.

Design as per EN558-1&2 / API594

| Sizes   | Pressure Class                |
|---|-------------------------------|
| 1/2" to 6"  | #150 to #800   PN 10 to PN 40 |
| <b>End connection</b> - Wafer Ends (Sandwich Type)   Lug Ends |                               |



### BELLOW SEALED VALVE

Bellow sealed valves is a kind of a Regulation cum Isolation valve which Regulate & Isolate the pressure & Flow with its compact structure making sure that the leak proof valve helps in avoiding leakages through Valve Body.

Designed as per API 600 / API 602 / BS 1873 / BS 1414

| Sizes   | Pressure Class |
|---|----------------|
| 1/2" to 24"   | #150 - #2500   |
| <b>End connection</b> - Flanged   ButtWeld   Threaded   Socket Weld |                |

#### CLIENTS





### DUAL PLATE CHECK VALVE

Flovel Valves has taken leadership in designing and manufacturing Dual Plate Check Valves, supplying to HVAC OIL & GAS, Petrochemicals, Refineries, Steel Plants, Fertilizer, Chemical, Food and various other sectors internationally.

Designed as per API 594, API 6D and tested as per API 598

Lug Type (DXLR)

#### Sizes

2" - 104" (50mm-2600mm)

#### Pressure Class

ASME 150-2500 | API 2000-20000 | PN 10 - PN 400

End connection - Wafer | Flanged | Solid Lug | Butt Weld End | Hub-End



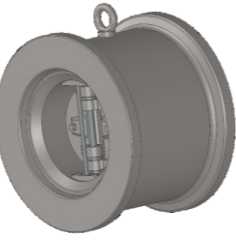
Wafer Type (DXWR)



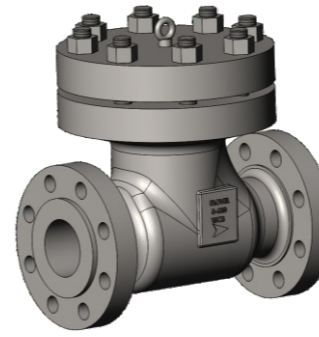
Flanged Type (DXFR)



Butt Weld Type (DXBR)



Hub Type (DXHR)



### SWING CHECK VALVE

Swing Check Valves are single-direction flow valves used to allow unlimited flow in one direction and restrain flow in the opposite direction. Swing check valves are straight-through valves that work automatically.

Designed as per API 6D, BS 1868, ASME B16.34, ASME B16.10

#### Sizes

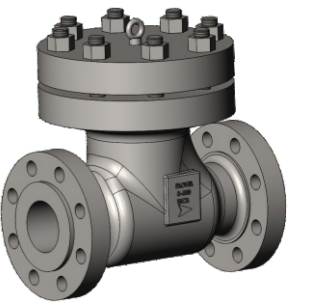
2" - 12" (50mm-2600mm)

#### Pressure Class

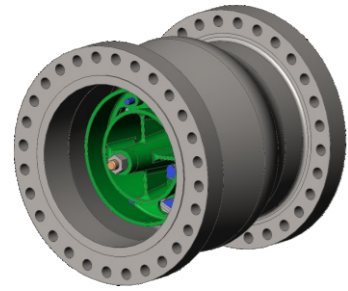
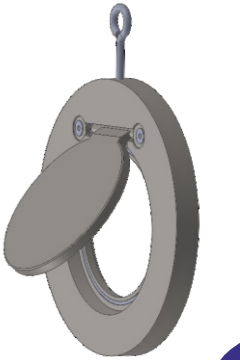
#150 | #300 | #600

End connection - Flanged END | Wafer END

Flanged Type (SCFO)



Flapper Type (SCVX)



### NON SLAM NOZZLE CHECK VALVE

Nozzle check Valve has High Velocity flow without Cavitation and Surge Protection are the Key reasons to install Nozzle Checks. It has an edge over Swing / Dual Checks when compared for Pressure Drop and Cv values.

Designed as per API 6D, ASME B16.34

#### Sizes

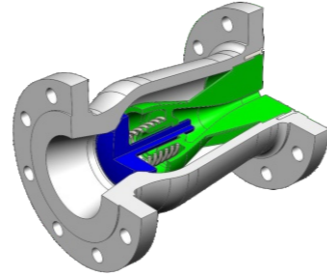
Single - 0.5" - 14" (DN 15 - DN 350)  
Double - 16" - 80" (DN 400 - DN 2000)

#### Pressure Class

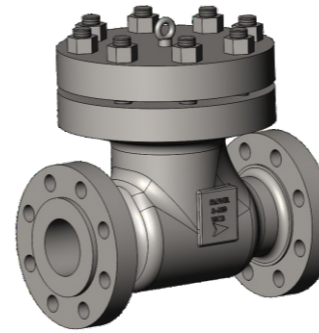
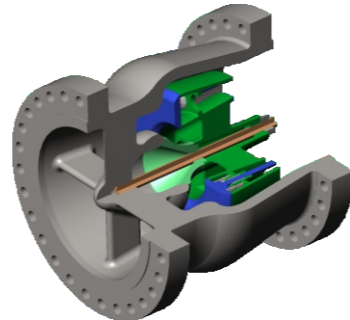
ASME 150-2500 | API 5000-30000 | PN 10 - PN 64

End connection - Flanged | Butt Weld | HUB

Solid Disc



Ring Disc



### PISTON LIFT CHECK VALVE

Flovel manufactures Piston Type Check Valves is the unique full opening design is best suited to dampen the piston's response to sudden or rapid changes in flow, negating the chances of pressure drop across the valve.

Designed as per API 602, ISO 15761, ASME B16.34

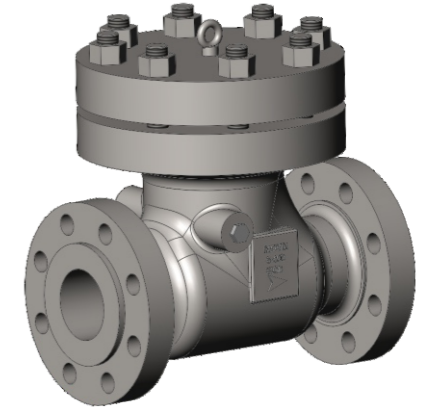
#### Sizes

1/2" - 2"

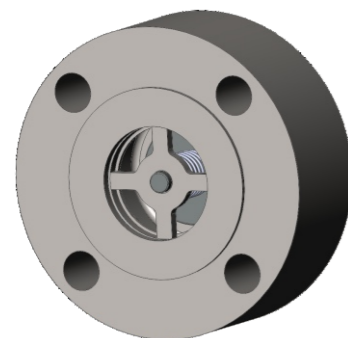
#### Pressure Class

#800 | #1500 | #2500

End connection - Butt Weld | Socket Weld | Screwed | Flanged



Piston Type Check Valve (PCFO)



### SINGLE DISC CHECK VALVE

Flovels' highly specialized product range includes custom designed check valves catering to various services, serving HVAC OIL & GAS, Petrochemicals, Refineries, Steel Plants and various other sectors internationally.

Design as per EN 558-1&2, API 594

#### Sizes

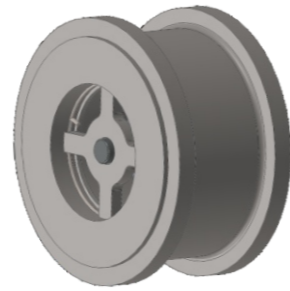
1/2" to 6"

#### Pressure Class

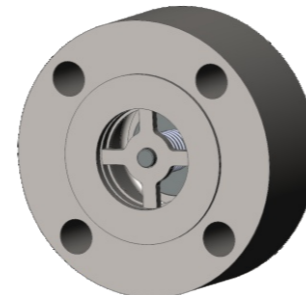
#150 to #800 | PN 10 to PN 40

End connection - Wafer Ends (Sandwich Type) | Lug Ends

Wafer Type (CVWX)



Lug Type (CVLX)



### CERTIFICATION

| TYPE ACCEPTANCE TEST CERTIFICATE |  |
|----------------------------------|--|
| REPORT NO                        | FVPL-TAT-003-2020  |
| DATE OF REPORT                   | 30.11.2020   |
| CUSTOMER                         | PETROLEUM DEVELOPMENT OMAN LLC   |
| CONTRACTOR                       | PETROFAC E&C OMAN LLC  |
| PO NO.                           | ES08-PPF004-DL-08.10.2019  |
| PROJECT NAME & NO.               | C311756-MARMAJ POLYMER PHASE 3 PROJECT   |
| MANUFACTURERS                    | FLOVEL VALVES PVT. LTD.  |
| MANUFACTURERS REF.               | DA-075/19-20   |
| VALVE DESCRIPTION                | 32", CL 300, Metal Seat, Dual Plate Check Valve (Body Material - CF8M)   |
| VALVE SR. NO. & HEAT NO.         | Sr. No.: D4859 Heat No: B2969 Tag No: 776814.007.1   |
| TEST SEQUENCE:                   | 25. Check valves from -29 °C to +200 °C.   |
| TECHNICAL CLASSIFICATION CODE    | CH-DP-MX-LD-RL-XX-XX-AP594   |
| PRODUCT GROUP DESCRIPTION        | Flanged, Metal Seated<br>Design to API 594, SP-2154, 303<br>Material body - ASTM A351 Gr. CF8M   |
| TEST TEMPERATURE RANGE           | Ambient to Plus 450 °C   |
| SIZE AND PRESSURE RANGE          | DN 750(30"), DN 900(36"), DN 1050(42"), DN 1200(48")<br>Pressure Rating Class - 150  |
| ISA DRAWING OF TAT VALVES        | MAN-00-PPF004-ZV-C01-00001-0000_04   |
| Conclusion                       | Based on the Technical Qualification carried out during November 2020 in accordance with testing procedure MAR-00-PPF004-ZV-06-0002-0000, RIS, MESC SPE 77 - 300-2012, MESC SPE 77 - 300A, MESC SPE 77-300B has been accepted by TPA based on successful Type Acceptance Testing (TAT) result of: FVPL-TAT-003-2020. |
| TAT Date                         | 07 <sup>th</sup> November 2020, 20 <sup>th</sup> November 2020, 28 <sup>th</sup> November 2020, 30 <sup>th</sup> November 2020.  |

| TYPE ACCEPTANCE TEST CERTIFICATE |   |
|----------------------------------|---|
| REPORT NO                        | FVPL-TAT-003-2020   |
| DATE OF REPORT                   | 21.06.2020  |
| CUSTOMER                         | SAHARIN ENERGY INVESTMENT COMPANY LIMITED   |
| CONTRACTOR                       | PETROFAC FACILITIES MANAGEMENT LIMITED (PFML)   |
| PO NO.                           | 202002021-C.O.-2, DT. 13.05.2018  |
| PROJECT NAME & NO.               | A-2038 - OFF Compression Project  |
| MANUFACTURERS                    | FLOVEL VALVES PVT. LTD.   |
| MANUFACTURERS REF.               | CA-0247/18-19   |
| VALVE DESCRIPTION                | 30", CL 300, Metal Seat, Axial Flow Non Slam Check Valves (Body Material - LCC)   |
| VALVE SR. NO. & HEAT NO.         | Sr. No.: N659 Heat No: B6217 Tag No: SP-P-9073  |
| TEST SEQUENCE:                   | 24. Check valves from -29 °C to +80 °C and +200 °C.   |
| TECHNICAL CLASSIFICATION CODE    | CH-AX-MX-LD-RL-XX-XX-AS1634-01  |
| PRODUCT GROUP DESCRIPTION        | Flanged, Metal Seated<br>Design to ASME B16.34<br>Material body - ASTM A512 Gr. LCC   |
| TEST TEMPERATURE RANGE           | Minus 48 °C to Plus 150 °C  |
| SIZE AND PRESSURE RANGE          | DN 750(30"), DN 900(36"), DN 1050(42"), DN 1200(48")<br>Pressure Rating Class - 150   |
| ISA DRAWING OF TAT VALVES        | MAN-00-PPF004-ZV-C01-001-01-REV. 03   |
| Conclusion                       | Based on the Technical Qualification carried out during February 2020 to June 2020 in accordance with testing procedure MAR-00-PPF004-ZV-06-0002-0000, RIS, MESC SPE 77 - 300-2012, MESC SPE 77 - 300A, MESC SPE 77-300B has been accepted by TPA based on successful Type Acceptance Testing (TAT) result of: FVPL-TAT-003-2020. |
| TAT Date                         | 24 <sup>th</sup> & 25 <sup>th</sup> February 2020, 14 <sup>th</sup> & 15 <sup>th</sup> March 2020, 08 <sup>th</sup> & 09 <sup>th</sup> June 2020, 18 <sup>th</sup> June 2020, 22 <sup>nd</sup> June 2020.   |

| TYPE ACCEPTANCE TEST CERTIFICATE |  |
|----------------------------------|--|
| REPORT NO                        | FVPL-TAT-005-2020  |
| DATE OF REPORT                   | 28.11.2020   |
| CUSTOMER                         | PETROLEUM DEVELOPMENT OMAN LLC   |
| CONTRACTOR                       | PETROFAC E&C OMAN LLC  |
| PO NO.                           | ES08-PPF004-DL-08.10.2019  |
| PROJECT NAME & NO.               | C311756-MARMAJ POLYMER PHASE 3 PROJECT   |
| MANUFACTURERS                    | FLOVEL VALVES PVT. LTD.  |
| MANUFACTURERS REF.               | DA-075/19-20   |
| VALVE DESCRIPTION                | 30", CL 300, Metal Seat, Dual Plate Check Valve (Body Material - CF8M)   |
| VALVE SR. NO. & HEAT NO.         | Sr. No.: D3868 Heat No: A305 Tag No: 776814.026.1  |
| TEST SEQUENCE:                   | 25. Check valves from -29 °C to +200 °C.   |
| TECHNICAL CLASSIFICATION CODE    | CH-DP-MX-LD-RL-XX-XX-AP594   |
| PRODUCT GROUP DESCRIPTION        | Flanged, Metal Seated<br>Design to API 594, SP-2154, 303<br>Material body - ASTM A351 Gr. CF8M   |
| TEST TEMPERATURE RANGE           | Ambient to Plus 450 °C   |
| SIZE AND PRESSURE RANGE          | DN 600(24"), DN 750(30"), DN 900(36"), DN 1050(42")<br>Pressure Rating Class - 150   |
| ISA DRAWING OF TAT VALVES        | MAN-00-PPF004-ZV-C01-00001-0000_04   |
| Conclusion                       | Based on the Technical Qualification carried out during November 2020 in accordance with testing procedure MAR-00-PPF004-ZV-06-0002-0000, RIS, MESC SPE 77 - 300-2012, MESC SPE 77 - 300A, MESC SPE 77-300B has been accepted by TPA based on successful Type Acceptance Testing (TAT) result of: FVPL-TAT-005-2020. |
| TAT Date                         | 04 <sup>th</sup> November 2020, 09 <sup>th</sup> November 2020, 18 <sup>th</sup> November 2020, 28 <sup>th</sup> November 2020.  |



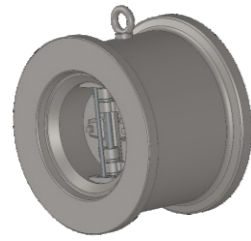
Wafer Type (DXWR)



Flanged Type (DXFR)



Butt Weld Type (DXBR)



Hub Type (DXHR)



Lug Type (DXLR)

### DUAL PLATE CHECK VALVE

Flovel Valves has taken leadership in designing and manufacturing Dual Plate Check Valves, supplying to HVAC OIL & GAS, Petrochemicals, Refineries, Steel Plants, Fertilizer, Chemical, Food and various other sectors internationally.

Designed as per API 594 / API 6D / API 598

#### Sizes

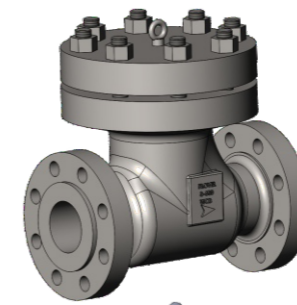
2" - 104" (50mm-2600mm)

#### Pressure Class

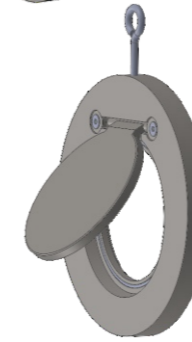
ASME 150-2500 | API 2000-20000 | PN 10 - PN 400

End connection - Wafer | Flanged | Solid Lug  
Buttweld End | Hub-End

Flanged Type (SCFO)



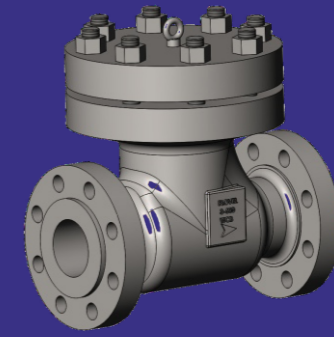
Flaper Type (SCVX)



### SWING CHECK VALVE

Swing Check Valves are single-direction flow valves used to allow unlimited flow in one direction and restrain flow in the opposite direction. Swing check valves are straight-through valves that work automatically.

Designed as per API 6D / BS 1868 / ASME B16.34 / ASME B16.10



#### Sizes

2" - 12" (50mm-2600mm)

#### Pressure Class

#150 | #300 | #600

End connection - Flanged END | Wafer END

### NON SLAM NOZZLE CHECK VALVE

Nozzle check Valve has High Velocity flow without Cavitation and Surge Protection are the Key reasons to install Nozzle Checks. It has an edge over Swing / Dual Checks when compared for Pressure Drop and Cv values.

Designed as per API 6D / ASME B16.34

#### Sizes

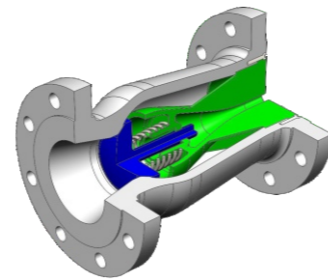
Single - 0.5" - 14" (DN 15 - DN 350)  
Double - 16" - 80" (DN 400 - DN 2000)

#### Pressure Class

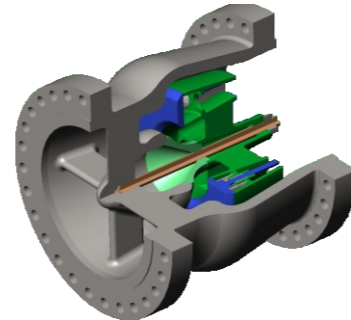
ASME 150-2500 | API 5000-30000 | PN 10 - PN 64

End connection - Flanged | Buttweld | HUB

Solid Disc



Ring Disc



### PISTON LIFT CHECK VALVE

Flovel manufactures Piston Type Check Valves is the unique full opening design is best suited to dampen the piston's response to sudden or rapid changes in flow, negating the chances of pressure drop across the valve.

Designed as per API 602 / ISO 15761 / ASME B16.34

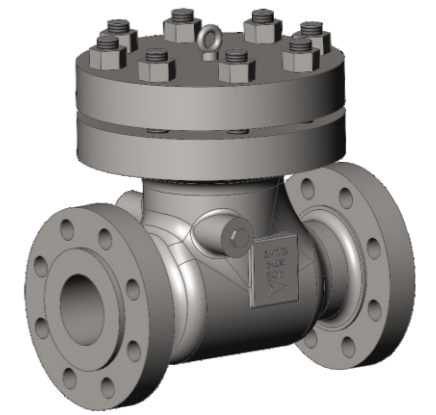
#### Sizes

1/2" - 2"

#### Pressure Class

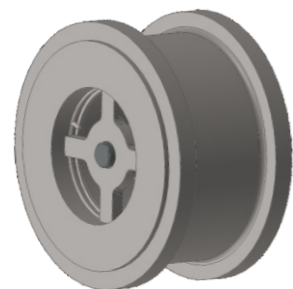
#800 | #1500 | #2500

End connection - Butt Weld | Socket Weld | Screwed | Flanged

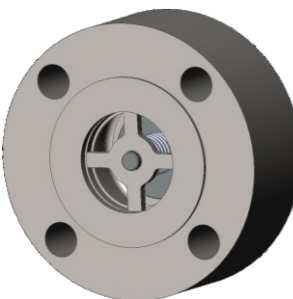


Piston Type Check Valve (PCFO)

Wafer Type (CVWX)



Lug Type (CVLX)



### SINGLE DISC CHECK VALVE

Flovels' highly specialized product range includes custom designed check valves catering to various services, serving HVAC OIL & GAS, Petrochemicals, Refineries, Steel Plants and various other sectors internationally.

Design as per EN 558-1 & 2 / API 594

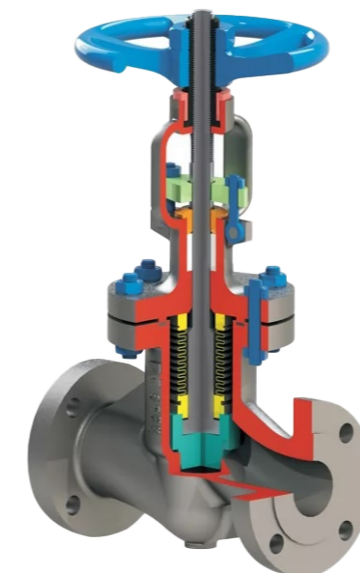
#### Sizes

1/2" to 6"

#### Pressure Class

#150 to #800 | PN 10 to PN 40

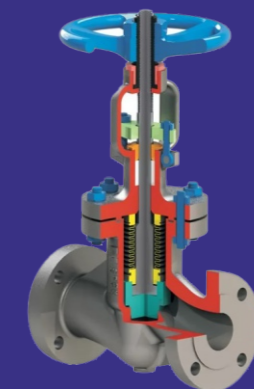
End connection - Wafer Ends (Sandwich Type) | Lug Ends



### BELLOW SEALED VALVE

Bellow sealed valves is a kind of a Regulation cum Isolation valve which Regulate & Isolate the pressure & Flow with its compact structure making sure that the leak proof valve helps in avoiding leakages through Valve Body.

Designed as per API 600 / API 602 / BS 1873 / BS 1414



#### Sizes

1/2" to 24"

#### Pressure Class

#150 - #2500

End connection - Flanged | Buttweld | Threaded | Socket Weld